

# Bacon Hill beckons

★ Begin tour at intersection of Wall Street and Route 29, about two miles west of Schuylerville.

- 1 Bourret Dairy Farm** [MILE 1.0]  
Larry and Jerry Bourret moved to this 175-acre farm from Connecticut in 1981. They produce corn, alfalfa, sorghum and grasses on 400 acres to support a herd of 130 dairy cows.
- 2 Kings-Ransom Farm and Bed and Breakfast** [MILE 1.9]  
Brothers Jan and Jeffrey operate this dairy farm along with their parents, Edgar and Carolyn, and Jeffrey's wife Becky. They milk 560 cows, crop 980 acres and employ eight people. They also breed and market registered Holsteins.



Turn right onto King Road, proceed carefully onto Route 32.  
[MILE 2.7] Make an immediate left onto West River Road.

**3 Welcome Stock Farm** [MILE 3.6]  
Bill Peck and his sons Bill and Neil are the fifth and sixth generations to operate this farm with 300 cows, 900 acres of corn and hay and six employees. They market frozen Holstein embryos around the world.

**4 Foster Farm** [MILE 4.4]  
Tom and Carole Foster grow strawberries and asparagus, raise 130 sheep and produce lamb, sausage, yarn and woolen goods to sell at farmers' markets and craft fairs. Pick-your-own strawberries are available in June.

[MILE 4.6] Turn right onto Harris Road. View the Hudson River that forms the eastern border of Saratoga County. In the 1800s, John Harris developed a large farm and mercantile center here, shipping agricultural and forest products on canal boats to New York City.  
[MILE 5.4] Turn right onto West River Road.  
[MILE 6.2] Turn left onto Austin Road.  
[MILE 7.2] Turn left onto Purinton Road.

**5 Purintondale Farm** [MILE 7.3]  
Lyle and Nancy Purinton operate this fifth generation 75-cow dairy and raspberry farm. Foreign trainees who help with the farm work introduced rotational grazing here, which reduces costs, improves soils and decreases erosion.

**6 Win\$um Ranch** [MILE 8.0]  
George Peters, his wife Terry and her son Shawn Quinn operate the 140-acre horse boarding and training facility. Riding lessons are offered in a solar building, and calf-roping events are held here biweekly.

[MILE 8.2] Bear left onto Route 32 at the yield sign.

**7 Barber Brothers Dairy** [MILE 9.7]  
Clint Barber, along with his son Chad, brother Tom and nephew Bill, operate this 280-cow dairy farm, selling their milk to Stewart's Ice Cream Co. They grow corn and alfalfa on 1,200 acres and raise 350 calves and heifers.

**8 Black Orchid Stables** [MILE 9.9]  
In 1990, Clint and Linda Barber started this operation to breed, train and show Morgan horses. The 30-stall barn has an indoor riding arena and breeding laboratory for artificial insemination.

For detailed information about the farms and heritage of Bacon Hill, visit the tour's Web site: [www.saratogafarms.com](http://www.saratogafarms.com)



**9 Clear Echo Farm** [MILE 10.7]  
Old barns add to the charm of this modern farm, established in 1867 by the Peck family. Today, Kevin Peck and his parents, Larry and Jean, till 600 acres to grow feed for 280 dairy cows and 220 calves and heifers. They sell Holstein embryos and young sires to customers around the world.

**10 Percy Davis Farm** [MILE 11.3]  
This horse farm breeds standard-bred horses and boards racehorses. Percy also trains horses at the Saratoga Harness track and races horses at tracks across the state.

**11 Winney Farm** [MILE 11.7]  
People come from all over the Northeast to pick blueberries each summer from the 14,000 bushes on Byron Winney's pick-your-own blueberry farm. The Winney family has farmed in this area for more than 200 years.

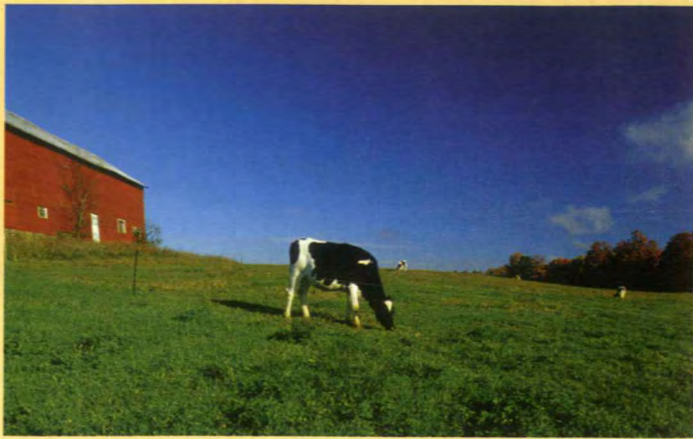
[MILE 12.0] Turn left onto Stone Bridge Road, just past the Bacon Hill Reformed Church (c. 1820).

**12 Wetlands and Wildlife Habitat** [MILE 12.3-12.4]  
Home to hundreds of species of plants and animals, wetlands on both sides of the road contribute to clean water and air. They also provide scenic vistas, wildlife habitat and recreational opportunities.

**13 Thomas Poultry Farm** [MILE 13.4]  
Brian and Jennifer Thomas, along with her brother Ken Bean, market 12,000 dozen eggs per day throughout New York state. They raise 500 acres of corn to feed their 180,000 hens.

[MILE 13.8] Turn right onto Callahan Road.  
[MILE 14.9] Turn right onto West River Road.  
[MILE 17.2] Turn left onto Route 32 to travel toward Schuylerville and return to Route 29.

Please remember these are working farms and may not be open to the public. Exercise caution while driving and slow down for farm vehicles. For a list of farms open to visitors, please contact Cornell Cooperative Extension at 885-8995.



This brochure was produced by:

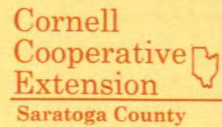
**Saratoga County Agricultural and Farmland Protection Board**

*In cooperation with:*



**American Farmland Trust**

Northeast Regional Office  
110 Spring Street, Saratoga Springs, NY 12866  
(518) 581-0078 • [www.farmland.org](http://www.farmland.org)



**Cornell  
Cooperative  
Extension**  
Saratoga County

50 West High Street, Ballston Spa, NY 12020  
(518) 885-8995 • [www.ccesaratoga@cornell.edu](http://www.ccesaratoga@cornell.edu)

Funding was provided by The Rural New York Grant Program administered by The Open Space Institute with the support of The J.M. Kaplan Fund, The Andy Warhol Foundation for the Visual Arts, The Margaret L. Wendt Foundation, Philip Morris Companies Inc., The Woodcock Foundation, The New York Times Company Foundation and The Northern New York Community Foundation, Inc.

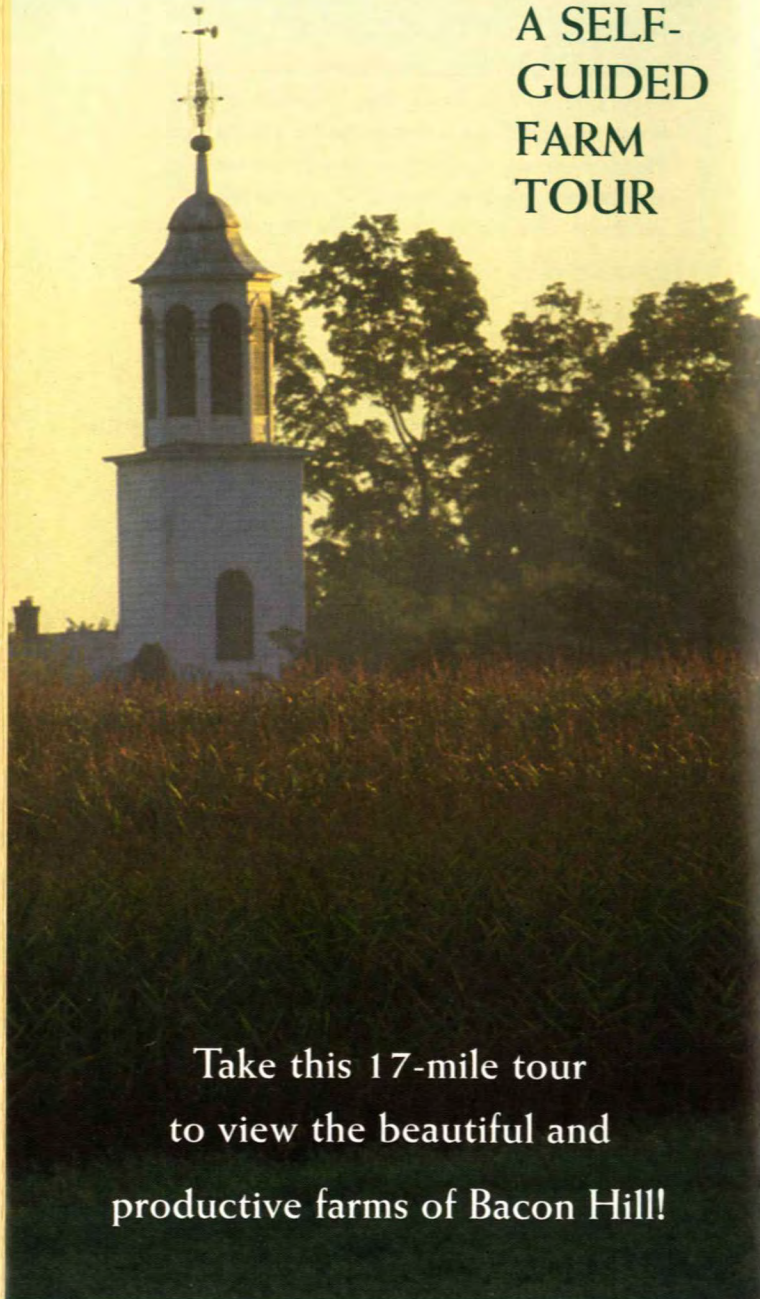
Additional funding was provided by Saratoga County Dairy Promotion Committee, Saratoga County Farm Bureau and First Pioneer Farm Credit.

**Photographs by Jim Newton**

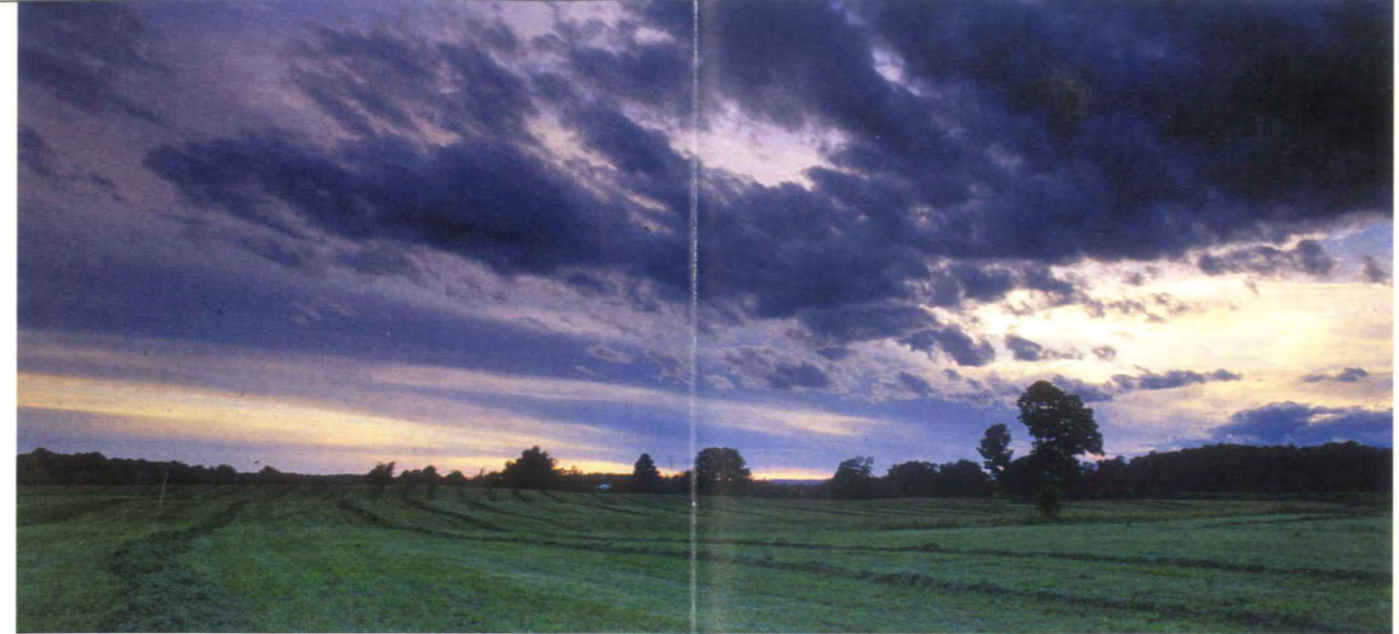
For more great photos of Bacon Hill,  
explore the Web site:  
**[www.saratogafarms.com](http://www.saratogafarms.com)**

# Bacon Hill *beckons*

**A SELF-  
GUIDED  
FARM  
TOUR**



Take this 17-mile tour  
to view the beautiful and  
productive farms of Bacon Hill!



**T**ucked away in the town of Northumberland is the hamlet of Bacon Hill—an area rich in agricultural heritage and natural scenic beauty. Often called the “bread basket” of Saratoga County, the rolling hills and flat plains of Bacon Hill are part of a working landscape cultivated by farmers. A bounty of agricultural goods is produced here—from milk to eggs to wool and blueberries.

Though we have witnessed the loss of Saratoga County farmland over the past four decades, more than 400 farms and 70,000 acres of farmland remain. In steadfast agricultural communities such as Bacon Hill, farming lives on—helping to enhance the quality of life for those who live in or visit Saratoga County.



### **WHY SAVE FARMS?**

*Saratoga County farms:*

- Provide scenic landscapes, open space and rural character
- Contribute more than \$100 million to the county's economy every year
- Maintain habitat for many wildlife species
- Give us a bounty of local farm products from milk to eggs, apples, flowers, wool and vegetables

### **YOU CAN HELP!**

*Support local farmers:*

- Buy locally grown produce at roadside stands and farmers' markets
- Be friendly toward farmers and understanding of farm practices
- Show your children how food is produced—take them to local farm events

*Express yourself:*

- Let your town leaders know the importance of stopping the destruction of productive farmland
- Encourage your town board to support agricultural districts, right-to-farm laws, purchase of development rights programs, and other initiatives that help keep farmers in business
- Join organizations, such as American Farmland Trust and Cornell Cooperative Extension, that are dedicated to furthering agriculture